

HOME PESTICIDE CHART

What to use and where to use it

Inside Your Home

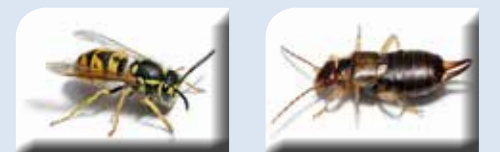
Sheds, Garages & Kennels

Outside Your Home

Driveways & Paths

Lawns

Vegie Patch, Flowers & Fruit Trees



PLEASE TURN OVER FOR PRODUCT INFORMATION

HOME PESTICIDE CHART

What to use and where to use it



Area	Pest	Product	Product Summary
Inside the Home	Rats and Mice	TOMCAT	Controls rats and mice around the home. Includes glue boards, catch and release traps, easy disposal traps and reusable traps.
	European Wasp, Cockroaches, Mosquitoes, carpet beetles, clothes moths, flies, silverfish, ants, bed bugs, earwigs, spiders, millipedes and slaters.	BATTLEAXE PRO	Handy aerosol can with long extension tube gets right into cracks and crevices. Works at a 360° angle.
	Cockroaches, spiders, ants, flies, silverfish, clothes moths, carpet beetles, bed bugs, mosquitoes and stored product pests.	FARMAXE 125 EC	The great all rounder, odourless and low toxicity to mammals and birds.
	Flies, mosquitoes, moths, ants, silverfish, flies, cockroaches, spiders and earwigs.	PYMATIC	3,000 shots of natural pyrethrum, effective within the hour and covers 170 cubic metres.
	Ants, Bed Bugs, Carpet Beetles, Cockroaches, Fleas, Spiders, Silverfish, Black Portuguese Millipedes, European Wasps, Flies, African Black Beetle.	TASER PRO	Odourless broad spectrum non-repellent insecticide. Biodegradable & surface friendly. Not sensitive to UV breakdown.
Outside the Home	European Wasp, Cockroaches, Mosquitoes, flies, ants, earwigs, spiders, millipedes and slaters.	BATTLEAXE PRO	Handy aerosol can with long extension tube gets right into cracks and crevices to kill anything with 6 or more legs.
	Cockroaches, spiders, ants, flies, silverfish and mosquitoes.	FARMAXE 125 EC	The great all rounder, odourless and low toxicity to mammals and birds.
	Termites, spiders, cockroaches, fleas, mosquitoes and flies.	OUT OF BOUNDS	General pest and termite insecticide for outside the home and in lawns.
	Ants, Bed Bugs, Carpet Beetles, Cockroaches, Fleas, Spiders, Silverfish, Black Portuguese Millipedes, European Wasps, Flies, African Black Beetle.	TASER PRO	Odourless broad spectrum non-repellent insecticide. Biodegradable & surface friendly. Not sensitive to UV breakdown.
Pet Kennels	Fleas, ticks and ants.	OUT OF BOUNDS	Season long residual control, granular formula that is dust free.
Driveways and Paving	Broadleaf weeds & grass weeds.	WEEDBLITZ	Made from natural pine oil, safe for earthworms, soil microbiology and plant root systems. Kills Creeping Oxalis in 2 hours.
Vegie Patch, Flowers and Fruit Trees	Brown spot, anthracnose, rust, alternaria leaf spot, grey mould, septoria leaf spot, botrysis, black spot.	MANCOZEB	For the control of fungal disease on your fruit, vegetables, ornamentals and turf.
	Queensland Fruit Fly, Mediterranean Fruit fly.	CERATRAP	100% ecological solution, easy and economical to use. Sensitive to beneficial insects.
	Slugs and Snails.	ERADICATE	Low toxicity to pets compared to other baits and does not contain poison. Can be used safely near waterways.
Sheds, Garages and non living areas	Rats and Mice.	TOMCAT	Range of products to control rats and mice around the home. Includes glue boards, catch and release traps, easy disposal traps and reusable traps.
	Cockroaches, moths, silverfish, ants, flies and other insects.	KILLMASTER PEST STRIP	Continuous protection for up to 4 months and will treat an area of 10 cubic metres.
	Termites, spiders, cockroaches, fleas, mosquitoes and flies.	OUT OF BOUNDS	General pest and termite insecticide for outside the home and in lawns.
Lawns	Bindii, clover, dandelion, thistles.	BIN-DIE	Controls most broadleaf weeds in lawn. Suitable for all lawn types.
	Lawn Armyworm, African Black Beetle,	OUT OF BOUNDS	Fast knockdown contact insecticide. When soil applied the active binds strongly to soil and has a low risk of leaching with rainfall.



For further information on how to protect your home using Barmac’s extensive range of products, log onto our website to view our products, search the **Technical Library** or try our **Problem Solver**.

Repellent Insecticides - Creates a barrier that is noticeable to the pests and they quickly learn to avoid it.
Non-Repellent Insecticides - An undetectable barrier. The pests crawl across the insecticide and transfer it back to the nest, eliminating the entire nest.