



# Product Information Sheet

## Diazinon

Analysis: 800g/L diazinon

Group	<b>1B</b>	Insecticide
-------	-----------	-------------

Diazinon is a highly versatile general insecticide used to control soil and foliage pests in a wide variety of crops.

### Benefits:

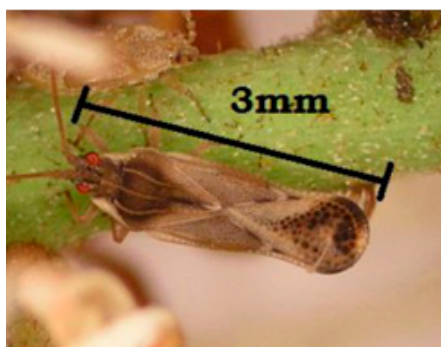
- Diazinon has dual activity, both as a contact insecticide, as well as a stomach poison after ingestion
- Diazinon does not accumulate in the soil and is biodegradable both by microbial and abiotic environmental factors
- Diazinon is a group 1B insecticide that is particularly effective as a contact insecticide
- Diazinon's differential mode of action makes it useful in rotation, especially in resistance management rotations
- Diazinon is one of a small number of versatile insecticides registered for use in onions in Australia



### Product Characteristics:

Colour	Specific Gravity
Light Brown	1.08

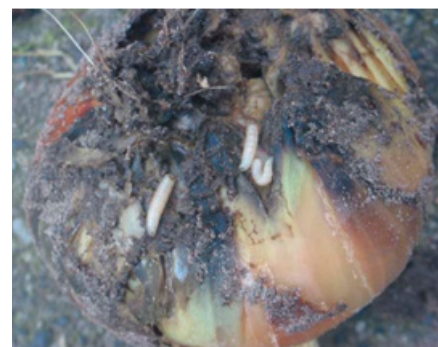
Pack Sizes: 5L and 20L packs



**Adult Lace Bug (*Ulonemia decoris*)**  
on a raceme (approx 3mm long).



**Lace Bug Nymph**



**Onion Maggot**

This publication is a guide only and no substitute for professional or expert advice. The product label should be consulted before use of any of the products referred to in this publication. Barmac (a division of Amgrow Australia Pty Ltd) shall not be liable for any results, loss, or damage whatsoever, whether consequential or otherwise through the use or application of products and/or materials referred to herein.

Before using, always read the product label. More information: Contact your local Barmac distributor

200514 V1



# Diazinon

## VEGETABLES

CROP	PEST	STATE	RATE			WHP	CRITICAL COMMENTS
			VOL/HA	VOL/100L WATER	PER 15L KNAPSACK		
Beans	Bean fly	NSW, VIC, QLD, WA only	150mL	30mL		14 days	Spray thoroughly 3, 7 and 14 days after first plants emerge. Further weekly sprays may be necessary in heavy attacks.
	Bean caterpillar		700mL	-	-		Spray when necessary. Some control of aphids will be achieved.
	Blossom thrips	NSW, VIC, SA, WA, QLD only	350mL	30mL	5mL		Spray when crops are flowering and thrips are in damaging numbers. Repeat as necessary
	Seed maggot	NSW, VIC, SA, WA only	3-5L	-	-		Spray soil before sowing and work into a depth of 5-8 cm
Cabbage, cauliflower, broccoli, brussel sprouts, kale and kohlrabi	Cabbage white butterfly, centre grub, cluster caterpillar, cabbage aphid, green peach aphid	QLD only	750mL	140mL	30mL	14 days	Spray to run off with a good coverage. Apply at 10-14 day intervals.
	Cabbage white butterfly, cabbage moth	NSW, SA, WA only	0.7-1.4L	140mL	30mL		Spray to run off with a good coverage. Apply at 10-14 day intervals. Vary boom spray rate according to plant size. Some control of aphids will be achieved.
	Cabbage aphid	SA, WA only					
	Cabbage white butterfly	VIC only					
	Looper	NSW, VIC, SA, WA, QLD only	700mL	65mL	15mL		Spray to run off with a good coverage. Apply at 10-14 day intervals.
Beetroot, silverbeet, globe artichoke	Webworm	NSW, VIC, SA, WA, QLD only	700mL	-	-	14 days	Spray as necessary. Use 1L/ha for advanced crops. Some control of aphids will be achieved.
Cucurbits	Thrips	NSW, VIC, SA, WA, QLD only	350mL	30mL	5mL	14 days	Spray when crops are flowering and thrips are in damaging numbers. Repeat as necessary.
Onions, garlic	Onion thrips		700mL	65mL	-	14 days	Spray when thrips are in damaging numbers. Repeat every 10 days as necessary.
Onions	Onion seedling maggot	NSW, VIC, SA, WA only	700mL	65mL	-	14 days	Spray foliage when flies appear, usually as plants emerge. Respray every 10 days if necessary.
	Onion maggot, wireworm		3-5L	-	-		Spray soil before sowing and harrow to a depth of 5-8cm or irrigate immediately after application.
Potatoes	Potato moth	TAS, SA only	1L	-	-	14 days	Spray immediately when "blister" stage is noticed. In SA follow up every 14 days as required. Apply at least 170L of water/ha.
Tomatoes	Thrips	VIC, SA, WA, QLD only	350mL	30mL	5mL	14 days (H)	Spray from the seedling stage and repeat application at 7-14 day intervals as long as thrips are present. Effective thrip control is necessary to prevent spotted wilt virus infection.
	Wireworms	NSW only	0.7-1.4L	-	-		Spray soil either before sowing or transplanting and harrow to a depth of 50-80mm or irrigate immediately after application.
	Cutworms	NSW, VIC, SA, WA, QLD only					Spray as necessary. Vary rate according to plant size. Some control of aphids and thrips will be achieved.
Capsicum, Eggplant	Cutworms	NSW, VIC, SA, WA, QLD only	0.7-1.4L			14 days	
Sundry Vegetables*	Caterpillars, cutworm						

\*Including cantaloupes, carrots, celery, chokos, cucumbers, gherkins, lettuce, marrows, pumpkin, parsnips, peas, squash, watermelons, rhubarb, sweet corn







## PLANTATION AND ORCHARD CROPS

CROP	PEST	STATE	HIGH VOLUME PER 100L OF WATER	WHP	CRITICAL COMMENTS
Apple, pears (dormant)	San Jose scale	NSW, VIC, SA, WA only	65mL	14 days (H)	Add 3L of winter oil per 100L of spray. Spray thoroughly 2 weeks before green tip.
Apples, pears		VIC, WA only	65mL		Add 1.2L of summer oil per 100L of spray. Spray at petal fall, in early Dec and again in mid Jan if scale is serious. Also apply in autumn if scale is evident in the harvested crop.
Apples	San Jose scale, woolly aphid	SA, NSW only	65mL	14 days (H)	Spray at petal fall, in early Dec and again in mid Jan if scale is serious. These applications will keep woolly aphids in check during the period they are applied. This product will not adversely affect populations of predatory <i>Typhlodolus occidentalis</i> and <i>Typhlodromus pyri</i> . Add 1.2L of summer oil per 100L of spray. Apply in autumn if scale or aphids are evident in harvested crop.
	Greedy scale	WA only	65mL		Add 3L of oil per 100L of spray. Spray when buds are swelling. Spray as required November to March.
Bananas	Banana beetle borer	NSW only	125mL	14 days (H)	Spray in spring and again in late summer when adult beetles are present. Spray 600mL to the base of each plant.
	Banana rust thrip	QLD only	50mL		Ensure good coverage of fingers and penetration inside bunch. Apply as required when the bunch is fully emerged until bracts have fallen. Apply every 14 days between Nov and March in North Queensland when thrips are most active.
Blueberries	Scale insects	NSW only	70mL	14 days (H)	Spray in late afternoon after bees have finished foraging.
Citrus	Spined citrus bug	NSW only	65mL	14 days (H)	Add 1L of Winter Oil/100L of spray. Thoroughly wet bugs. DO NOT spray when fruit is less than 2.5cm diameter to avoid blemish.
	Citrus leaf miner	QLD, NSW only			Spray young growth every 10 days when pests are active.
	Grasshoppers	QLD only			Spray when necessary.
Cumquats, trifoliolate orange	Citrus leafminer	NSW only	65mL	14 days (H)	Check susceptible growth flushes mainly in late summer-autumn period. Apply thoroughly to the underside of infested leaves. Two sprays are normally required at 10-14 day intervals or a higher number of applications may be required in nursery situations.
Grape vines	Mealy bug	VIC, SA, WA only	30mL	14 days (H)	Spray during late Nov to early Dec. For late table grapes, spray early Nov again late Dec and follow up if necessary. Thorough coverage is essential.
	Australian plague locusts	WA only	65mL		Spray thoroughly as necessary.
Hops	Common and southern army worms	VIC only	65mL	14 days (H)	Spray when pests are first noticed. Repeat in 10 days if necessary.
Kiwifruit	Leatania scale, greedy scale	NSW only	70mL	14 days (H)	Apply when the crawlers are leaving the parent scale. A follow up application may be necessary.
	Leafroller caterpillar, cluster caterpillar				Apply at 10 to 14 day intervals when caterpillars are active.
Macadamia nuts	Macadamia felted coccid	QLD, NSW only	125mL	14 days (H)	Spray thoroughly when pests are noticed. Repeat applications monthly where necessary.
	Macadamia leaf minor	NSW only	65mL		Spray in the spring and autumn when new flush growth is attacked or as required. Thorough coverage of the outside canopy is necessary.
Pineapples	Pineapple scale	QLD, NSW only	65mL	14 days (H)	Add a non ionic surfactant. Spray plants thoroughly when scale or eggs are evident apply 2000 to 3000 litres of mixture per hectare. Repeat applications at 2 to 3 week intervals as necessary.
	Mealy bugs		Boom spray: 1.5-3L per Ha		Spray thoroughly as necessary. Use high rate for heavy infestations.
Stone fruit (dormant)	San Jose scale	SA, NSW, WA, VIC only	65mL	14 days (H)	Add 3 litres of Winter Oil per 100 litres. Spray thoroughly during dormant period up to bud-swell.
Stone fruit	San Jose scale	SA, NSW, WA, VIC only	65mL	14 days (H)	Apply with thorough coverage at bud-swell. Respray if aphid or scale numbers build up.
	Green peach aphid, black cherry aphid	NSW, WA, SA			





## PASTURES, CEREALS, SORGHUM, SUNDRY CROPS AND MUSHROOMS

CROP	PEST	STATE	RATE PER HA DILUTED IN WATER BOOM SPRAY, AIRCRAFT, MISTER	WHP	CRITICAL COMMENTS
Lucerne	Lucerne jassid	QLD only	350mL	2 days (G)	Spray with good coverage when pests are active.
	Spotted alfalfa aphid	VIC only	700mL	14 days (H)	Spray when there are 20-40 aphids/stem on mature plants or 1-2 aphids per stem on seedlings.
NSW only		500mL	Spray as soon as practical following cutting and repeat as necessary.		
Pastures	Pasture webworm	QLD only	700mL		Spray as soon as damage is noticed - July/Nov. Spray late in the day. Good coverage at ground level is important. Grazing or mowing assists.
Pastures, cereals (including maize, sorghum), oil seed crops (incl cotton), soybeans, sugar cane	Australian plague locusts	NSW, VIC, SA, WA, QLD only	700mL		Spray directly onto hopper bands and flying swarms.
	Spur-throated locust, migratory locusts	QLD, NSW only	700-850mL		Spray swarms in early morning or late evening when pests are roosting. Use higher rates in dense crops or if locusts are adults.
Cereal crops, pastures	Armyworm, cutworm	All states	1L		Spray when pests are first noticed and repeat in 10 days if necessary. Minimum application volumes per hectare by boom spray 110L by air or mister spray 22L.
Sorghum, pastures	Grasshoppers	VIC, TAS, WA only	1-1.4L		Spray swarms in early morning or late evening when pests are roosting.
Sorghum	Sorghum midge	QLD only	350mL		Spray from 90% sorghum head emergence to advanced flowering stage at 4 day intervals or as necessary, depending on pest numbers and crop potential.
		NSW only	350-700mL		In NSW use the lower rate for light infestations. Use the higher rate if infestations are heavy or where reinfestation is likely to occur quickly.
Cotton	Cotton flea beetle, red shouldered beetle	NSW only	350-500mL	2 days (G) 14 days (H)	Spray when insects are present
Chou moellier, canola, turnips	Cabbage moth, cabbage white butterfly	SA, VIC only	700mL	14 days (H)	Spray as necessary. DO NOT spray when bees are foraging.
Rice	Brown plant hopper	QLD only	350mL		Spray when pests are active. For aerial applications use at least 50L of spray per Ha.
	Bloodworm	NSW only	75-150mL		Spray first at or within 24 hours of sowing by aircraft or ground application equipment to flooded bays. When the water depth is 150mm or less use the 75mL per Ha rate. When water depth is between 150mL and 300mL or when high levels of recently incorporated organic matter are present, use 150mL per Ha rate. Apply further treatments as required until plants are established with satisfactory secondary root development.
Pastures, lawns, around trees	Argentine ants	WA ONLY	<b>High Volume:</b> 600mL/100L water. Use at least 1L of spray per 10m <sup>2</sup> . Spray lawns on a grid pattern of 1m <sup>2</sup>	2 days (G)	Thoroughly spray ants nests and infected areas. Apply coarse spray to pests and all trees alongside foundation walls, fences, paths and garden beds.
Mushrooms	Mushroom pests (various)	All states	<b>At spawning:</b> 140mL/10L water per tonne of moist compost	14 days (H)	Mix thoroughly with compost at spawning.
			<b>After casing:</b> 30mL/10L of water per tonne of moist compost		Spray over top of casing soil immediately after casing.
Nursery plants	Aphids, thrips, mealy bugs, scale insects, plant bugs, beetles	NSW, VIC only	<b>Dipping Mix:</b> 60mL/100L		Thoroughly drench plant material with the dipping mixture. Treatment can be used for plants being transported from NSW into Victoria.
Ornamentals, potted plants	Fungus gnats	QLD only	2mL/10L water		Apply as a drench. If problem persists, reduce watering or repot plants using less organic matter. Treat a few plants first to test for phytotoxicity.

### General Instructions

Before opening, carefully read Directions for Use, Precautionary Statements, Safety Directions and First Aid Instructions. Thorough coverage is essential.

**Not to be used for any purpose or in any manner contrary to this label unless authorised under appropriate legislation.**

### Withholding periods:

**Edible crops (H): DO NOT** harvest for 14 days after application.

**Pastures & Forage Crops (G): DO NOT** graze pastures or forage crops or cut for stock food for 2 days after application.

### Mixing:

Slowly add the required amount of this product to water in spray tank under agitation.

### Compatibility:

This product is compatible with Summer and Winter oils and White Oil.

**This product should not be mixed with** Dodine, lime sulphur, oxythioquinox or 2,4 DB.