



a division of Amgrow

Kierserite- Granular Magnesium Sulphate

Kierserite (Granular Magnesium Sulphate) 15.1% Mg, 20% S

KIESERITE

Kieserite is a naturally occurring mineral that is chemically known as magnesium sulphate monohydrate. It is mined from ancient marine deposits and used in the agricultural industry as a fertiliser source for magnesium and sulphur. Kieserite is slowly water soluble and suitable for soil application to a wide range of horticultural and broad acre crops. Kieserite is not suitable for fertigation or foliar application.

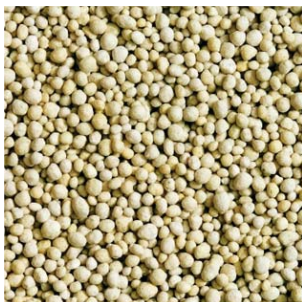
KIESERITE BENEFITS

- Kieserite in granular form is suited for blending with other granular fertilisers for custom blends
- Kieserite dissolves slowly with soil moisture to better match ongoing plant demand
- Kieserite will not leach as quickly as soil applied magnesium sulphate heptahydrate
- Supplementing magnesium will increase chlorophyll production and increase photosynthesis in plants
- Ideal for use on crops grown in low magnesium soils to increase productivity.

Pack Sizes - Available in 25 kg & 1200 kg bulk bags

PRODUCT CHARACTERISTICS

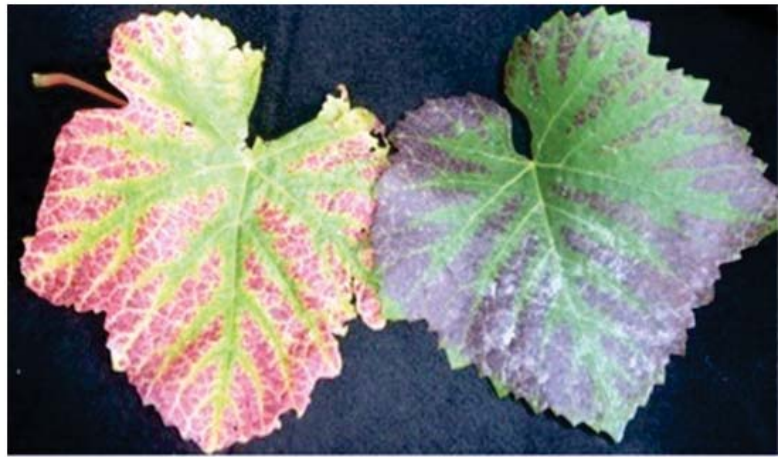
Colour	pH	Granule Size	Bulk Density (kg/m ³)
Off White Granule	9	2-4 mm Average	1300



Mg Deficiency in Blueberry



Mg Deficiency in Citrus



Mg Deficiency in Cotton





a division of Amgrow

Kieserite- *Granular Magnesium Sulphate*

APPLICATION

Kieserite can be used as a soil applied granular magnesium supplement in a regular nutrition program for applicable crops. Broadcast kieserite as a soil magnesium supplement to increase soil Mag levels. Alternatively band or side dress kieserite into the soil along long the crop rows alone or in a granular blend with other fertilisers. Multiple applications may be needed throughout the season. The application rate may need to be varied with changes in plant size, canopy or crop load.

DIRECTION FOR APPLICATION

Crop	Broadcast Rate	Band /Side Dress Rate	Comments
Cotton Sugarcane Broadacre Grains & Legumes Horticulture crops Pastures/Lucerne	150 – 600 kg/ha	10-100 kg/ha	Rates will vary for each situation. See your local agronomist for a prescribed nutrient budget to determine the optimum application rate for your specific purpose.

NOTE:

The suggested rates of application are designed for typical use conditions and should be used as a guide only. Because climatic and soil conditions, application methods, irrigation and agricultural practices are beyond the control of Barmac and cannot be foreseen, Barmac accepts no responsibility whatsoever for any commercial damage, loss or other result following the use of this product whether used in accordance with directions or not, subject to any overriding statutory provision and provided that such liability under those provisions shall be limited to the replacement of the goods as supplied or the rendering again of the services that are provided. The buyer accepts and uses this product subject to these conditions.