



a division of Amgrow

Permethrin D - Insecticide Dust

PERMETHRIN D

Professional Insecticide Dust (Group 3A)

Active Constituent: 10 g/kg Permethrin 25:75

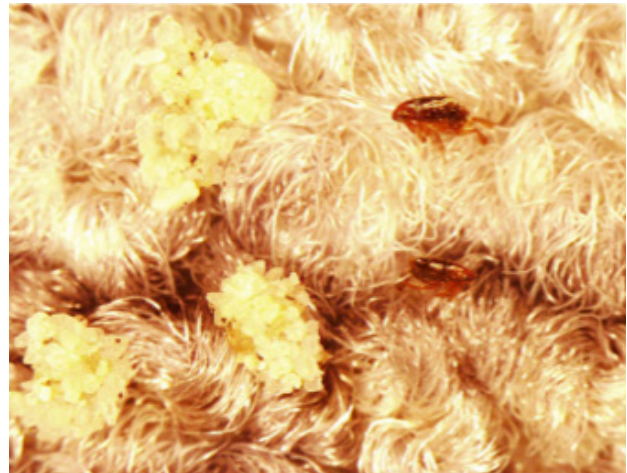
PERMETHRIN D

Permethrin D is a professional insecticidal dust formulation for the control of cockroaches, ants, fleas, termites, european wasps and other insects in certain situations

PERMETHRIN D BENEFITS

- An easy to handle and apply dusting formulation of the popular insecticide for controlling common insect pests in domestic, commercial and industrial situations
- Ideal for crack and crevice treatment of insect harborages
- Can be used to remove fleas from carpets indoors
- Reduced odour and photodegradation of active compared to liquid alternatives
- Can be applied by hand puffing applicator for specific purposes, refer to label

Pack Sizes - Available in 10 kg packs



Flea Pupae and Adult in Carpet



Wall Cracks Harbor Cockroaches



PRODUCT CHARACTERISTICS

Colour
White powder





Permethrin D - Insecticide Dust

a division of Amgrow

Application (Refer to product label for full situation listing and more detailed instructions)

Directions for Application

SITUATION		PEST	RATE	CRITICAL COMMENTS
DOMESTIC, INDUSTRIAL INSTITUTIONAL PREMISES	Food preparation and storage areas	Cockroaches, Silverfish	10g/m ² applied with a powder blower	Blow powder into cracks and crevices. Attention should be given to areas where insects congregate ie. warm, dark areas and around heat sources (stoves, radiators, fireplaces etc).
		Ants		Sprinkle powder around nests and along routes. When ants are invading houses treat the areas where they are entering the premises.
		Fleas		Dust powder directly into carpets & brush into pile. Also treat areas where flea larvae may develop.
	Living & sleeping areas	Bedbugs		Apply to bedroom furniture and mattresses as well as to any cracks, crevices or areas where insects may hide
ROOF VOIDS, WALL AND FLOOR VOIDS, CRAWL SPACES		Cockroaches, Silverfish, Ants, Fleas, Spiders and Bird mites (<i>Ornithonyssus</i> spp)	Blow dust into all void areas, ensuring all surfaces are thoroughly treated. Repeat Application if re-infestation occurs. Remove all birds nests and introduce physical bird barriers to prevent reinfestation of bird mites.	
MUSHROOM BEDS	Mushroom Sciarid Flies	Dust mushroom beds when necessary. Do not apply more than twice per week. Discontinue use when mushrooms reach the size of a ten cent piece. Do not apply later than 3 days before harvest.		
SKIN & HIDE PREPARATION	Hide Beetles (<i>Dermestes ater</i>)	Dust skins while on drying racks Dust the edges of dried baled skins.		
SEED POTATOES	Potato moth (<i>Phthorimaea operculella</i>)	600g/Tonne or 30g/50kg bag of seed potato	Apply dust while filling storage containers. Treated seed potatoes must only be used for sowing. Do not use as food or feed. Store treated seed potatoes away from other potatoes, food or feed. Mark bags or containers where treated seed potatoes are stored indicating that the potatoes have been treated.	

NOTE:

For insecticide resistance management Barmac Permethrin D Professional Insecticide Dust is a Group 3A insecticide. Some naturally occurring individual insects resistant to Barmac Permethrin D Professional Insecticide Dust and other Group 3A insecticides may exist through normal genetic variability in any insect population. The resistant individuals can eventually dominate the insect population if these insecticides are used repeatedly. These resistant insects will not be controlled by Barmac Permethrin D Professional Insecticide Dust and other Group 3A insecticides, thus resulting in reduction in efficacy and possible yield loss. Since the occurrence of resistant insects is difficult to detect prior to use, Barmac accepts no liability for any losses that may result from the failure of Barmac Permethrin D Professional Insecticide Dust to control resistant insects.