



Rose Spray Advanced

Ready to Use

Kills insect pests and mites on contact and systemically works from within the plant to control insect pests and diseases. For use on roses and ornamentals in the home garden.

HOW TO USE: Shake well before using.

DO NOT apply if rain is expected within 24 hours. DO NOT spray when shade temperatures are near 30°C or higher. DO NOT spray when soil is dry and plants are suffering from moisture stress.

SITUATION	PEST OR DISEASE	HOW TO APPLY
Roses (all types)	Aphids, Budworm (Helicoverpa spp.), Thrips, Two-spotted Mite, Whitefly, Black Spot, Powdery Mildew, Rust	Spray thoroughly, including undersides of foliage when new shoots emerge in spring or at first sign of insect pests or diseases. Repeat at 14 day intervals if required. Two-spotted Mites may require more frequent applications. For Hibiscus Flower Beetle, spray buds and flowers as needed. For Longtailed Mealybug, apply 3 sprays 2 weeks apart. For Psyllids, spray at first sign and then a week later. For Soft Scales, spray in late spring or when small scales are first seen. Apply 3 sprays, 2 weeks apart. For best results spray in the morning when there is little or no wind and little direct heat from the sun. Avoid spraying blooms or flowers in full sun as slight petal marking may occur.
Other Ornamentals (shrubs, flowering annuals, perennials & non-bearing citrus)	Aphids, Azalea Lace Bug, Budworm (Helicoverpa spp.), Hibiscus Flower Beetle, Mealybugs, Psyllids, Sap Sucking Bugs (including Bronze Orange Bug), Soft Scale, Thrips, Two-spotted Mite, Whitefly, Powdery Mildew, Rust	

NOT TO BE USED FOR ANY PURPOSE, OR IN ANY MANNER, CONTRARY TO THIS LABEL UNLESS AUTHORISED.

HOW TO PREPARE:

1. Lift lid on cap.
2. Remove sprayer from under handle and straighten hose.
3. Insert attachment at end of hose into hole in cap to lock hose permanently in place.
4. Adjust the spray pattern from a fan to a narrow jet by turning the end of the trigger.
5. Pump 5-10 times to commence spraying.
6. After spraying, wind hose around trigger and replace under handle.

CAUTION: DO NOT allow chemical containers or spray to get into drains, sewers, streams or ponds. DO NOT spray any plants in flower while bees are foraging. Will kill bees. Avoid contact with eyes and skin.

STORAGE AND DISPOSAL: Store in the closed, original container in a cool, dry place out of reach of children and pets. DO NOT store in direct sunlight. Dispose of empty container by wrapping in paper, placing in plastic bag and putting in garbage.

FIRST AID: If poisoning occurs, contact a Doctor or Poisons Information Centre. Phone Australia 13 1126; New Zealand 0800 764 766.

APVMA Approval Number:

Batch No:

Date of Manufacture:

Amgrow Pty Ltd ABN 81 100 684 786
82 Christensen Road, Stapylton Qld 4207
Customer Service Number 1800 063 619
www.amgrow.com.au

CAUTION
KEEP OUT OF REACH OF CHILDREN



Rose Spray Advanced

Ready to Use

ACTIVE CONSTITUENTS: 0.125 g/L IMIDACLOPRID
0.1 g/L TAU-FLUVALINATE, 0.05 g/L MYCLOBUTANIL

For use on all ornamentals.
Systemic Insecticide & Fungicide

Contents
750mL



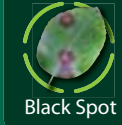
Aphids



Thrips



Powdery Mildew



Black Spot



a 4/106 grose street, parramatta nsw 2150
p 02 9630 1733 f 02 9630 1930
e info@dbgraphics.com.au
w www.dbgraphics.com.au

Name: Amgrow Rose Spray Advance RTU 750ml

DBG Job No: 57242

Item Code:

Date: 17/8/11

Proof No.: 1

Dimensions: 100mm x 125mm

Colours: CMYK + PMS 485C + PMS 3435C + PMS 376C + PMS 349C

+ KNIFE

PLEASE EXAMINE THIS PROOF CAREFULLY

Whilst all care and attention is taken when preparing your design, it is requested you check all details carefully. It is the responsibility of the client to ensure that all details shown are correct and ready for production. The client is responsible for any errors in the design, which are not corrected by the client, before the design is completed. This is a proof, the colours and screen densities used in the proofing process provide a representation only, the final colour(s) may vary from this proof.