



# ZP RAT BAIT

a division of Amgrow

## ZP RAT

Zinc Phosphide Bait

*Active Constituent: 20 g/kg Zinc Phosphide*

ZP Rat is used for the control of heavy infestations of rats in sugarcane crops. ZP Rat bait is a pelleted formulation conveniently packaged into 10 gram sachets. The zinc phosphide is uniformly distributed within the extruded pellet. This makes ZP Rat quite different to other zinc phosphide baits that are simply coated grain formulations. The incorporation of multiple food ingredients into the pelleted ZP Rat Zinc Phosphide Bait, results in an extremely palatable, more attractive Rat bait that is able to be used in field cropping situations. The pellets are structured and coated so as to resist crumbling and also to prevent deterioration from moisture.

## ZP RAT BENEFITS

- Extruded pellet formulation is more attractive to rats than typical coated grain baits.
- Coated to prevent breakdown from moisture and rain.
- Suitable for broadcast application in applicable crops.
- Zinc phosphide is uniformly distributed within each pellet and protected from wash off.
- Kills in 2-4 hours. Minimal secondary poisoning risk to birds, mammals and pets due to no accumulation in tissue and rapid dissipation.
- Permit: Pig Production Facilities PER81771.

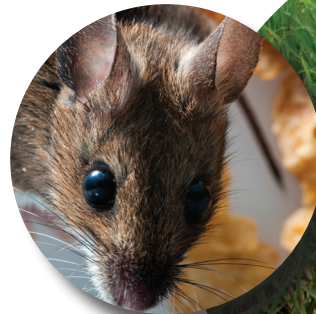
## PACK SIZE

Available in 4 kg bucket. Contains 400 x 10 gram sachets.



## PRODUCT CHARACTERISTICS

Colour
Off white cylindrical pellets packaged into 10 gram sachets





# ZP RAT BAIT

a division of Amgrow

## APPLICATION

Do Not apply bait to bare ground (including fallow where there is no vegetative cover).

Do Not apply by aerial application methods.

## DIRECTIONS FOR USE:

SITUATION	PEST	RATE	COMMENT
Sugarcane	Australian Native Ground Rats ( <i>Rattus sordidis</i> )  Australian Native Climbing Rat ( <i>Melomys burtoni</i> )	100 sachets/ha (1 kg/ha)	Place sachets within the crop, spaced not more than 10m apart to achieve an even distribution of 100 sachets per hectare. Only place in areas that have sufficient groundcover to camouflage the sachets. Sachets may be covered with leaf trash. Do not open sachets. ZP Rat Zinc Phosphide Bait should only be used as part of an integrated pest management strategy (see general instructions on label).

## WITHOLDING PERIOD

Do Not harvest any crops or allow livestock to graze baited areas for 14 days after application.

Do Not allow stock or pets to have access to baited