

**BRANDT**<sup>®</sup>

# Brandt Manni-Plex

High Performance Foliar Micronutrients



a division of Amagro





# Brandt Manni-Plex

## Optimizes Plant Health, Quality and Yield

BRANDT MANNI-PLEX foliar micronutrients help plants reach their full genetic potential by correcting nutrient deficiencies, building larger root systems, strengthening the plant's immune system and enhancing key physiological functions such as: cell division, nitrogen metabolism, carbohydrate utilization, nitrogen fixation, root nodulation, photosynthesis, flowering and fruiting.

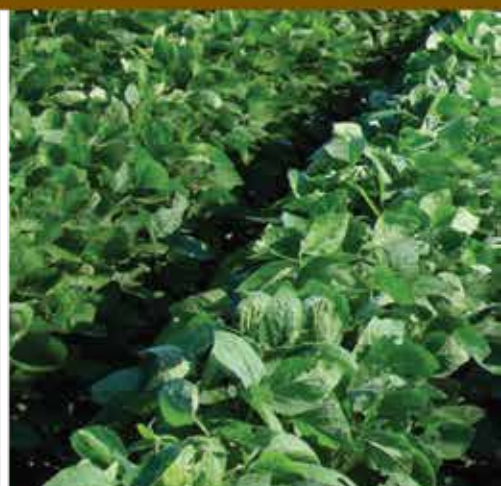
### Brandt Manni-Plex Technology Advantage



BRANDT MANNI-PLEX Technology greatly increases the absorption and movement of nutrients through the leaf cuticle to internal leaf structures.

- Convenient liquid form allows for easy foliar spraying
- Nutrients are immediately available to the plant
- Proprietary formulation coats leaves and sticks to the surface, making nutrients available longer
- Optimal molecular size and structure allows more nutrients to penetrate the leaf cuticle and move through the plant quickly
- Nutrients get directly into the plant's xylem and phloem
- Can be tank mixed with most insecticides, fungicides and plant growth regulators

### Brandt Manni-Plex Improves Fruit Set, Size and Uniformity





## Brandt Manni-Plex Delivers Consistent, Reliable Results

For over a decade, growers have seen the consistent and reliable results Brandt Manni-Plex delivers, such as:

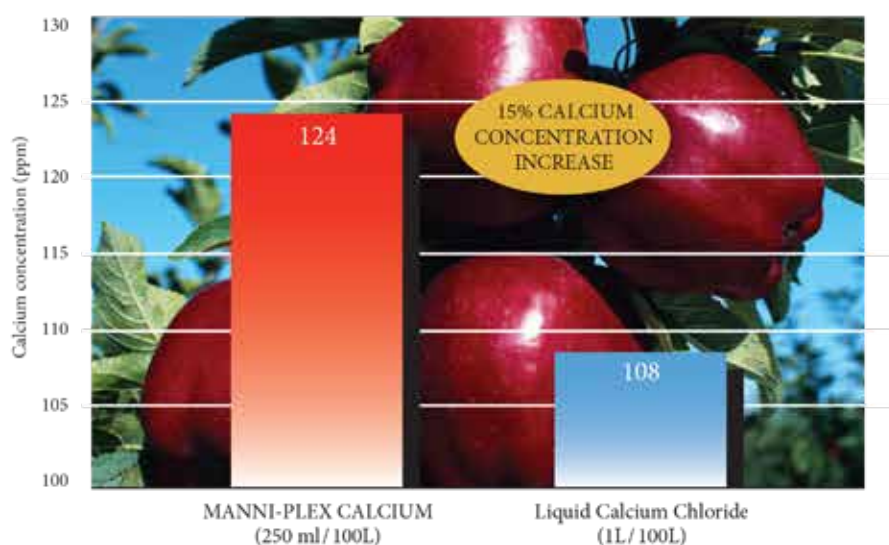
- Stronger, healthier plants
- More fruit sets
- Increased fruit size and uniformity
- Enhanced color
- Longer shelf life

### BRANDT MANNI-PLEX CALCIUM ON APPLES

Pickworth Estates Goulburn Valley 2007

Multiple applications of the below treatments resulted in a 15% increase in apple calcium levels with Manni-Plex Calcium.

Fruit tissue calcium level in apple (ppm)



## The Role of Calcium in Crops

### Calcium (Ca)

Calcium deficiency causes issues such as blossom end rot, bitter pit, tip burn, die-back, soft fruit and more in crops.

Calcium improves the cell wall structure and elongates cells at early developmental stages which promotes larger and more first/premium grade fruit. When Calcium is applied to crops, it physically hardens soft tissue to reduce bruising and quality disorders and increase shelf life.





## Brandt Manni-Plex® Range

Available in the following formulations:

### **Manni-Plex Calcium**

10.0% Nitrogen, 14.7% Calcium

### **Manni-Plex Boron**

5.2% Nitrogen, 3.8% Boron

### **Manni-Plex Cal-Mag**

10.0% Nitrogen, 7.3% Calcium, 3.6% Magnesium

### **Manni-Plex Iron**

7.2% Nitrogen, 6.0% Iron

### **Manni-Plex Bundle**

3.0% Nitrogen, 1.2% Iron, 3.0% Manganese, 2.4% Zinc

### **Manni-Plex Foundation**

3.0% Nitrogen, 0.24% Boron, 0.06% Copper,  
1.08% Manganese, 0.6% Magnesium, 5.69% Zinc  
1.25% Iron

### **Manni-Plex Potassium**

22.0% Potassium

### **Manni-Plex Magnesium**

6.3% Nitrogen, 5.0% Magnesium

### **Manni-Plex Manganese**

7.8% Nitrogen, 6.0% Manganese

### **Manni-Plex Moly**

6.3% Nitrogen, 6.2% Molybdenum

### **Manni-Plex Zinc**

6.4% Nitrogen, 8.8% Zinc



a division of Amgrow

#### **Barmac**

82 Christensen Road, Stapylton QLD 4207  
Phone: (07) 3802 5050 Fax: (07) 3807 6369  
Web: [www.barmac.com.au](http://www.barmac.com.au)

**BRANDT®**