

CERA BAIT - Fruit Fly Bait Solution

Analysis: Hydrolysed Proteins – 360 g/L

CERA BAIT is a fruit fly bait used in mixtures with approved registered insecticides for bait sprays against fruit flies such as Mediterranean Fruit fly (*Ceratitis capitata*) and Queensland Fruit Fly (*Bactrocera tryoni*)

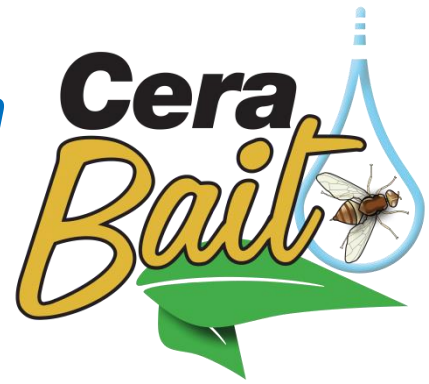
CERA BAIT can be used in a range of crops that are affected by fruit flies such as: Citrus, Stone Fruit (Peaches, Apricots, Plums, Nectarines), Grapes, Mangoes, Avocados and tropical fruits.

CERA BAIT is designed to be used with an approved registered insecticide. Application should commence 5-6 weeks prior to fruit ripening and maintained at 7 day intervals until 4 weeks after harvest. Reapplication is recommended after rainfall events. **CERA BAIT** can be used as either a band spray or spot spray treatment. **CERA BAIT** is suitable for use in ICA 28 and ICA 34 pre harvest bait spraying programs for citrus and strawberry. It is imperative that the insecticide label be strictly adhered to.

CERA BAIT is a salt free lure formulation that will cause less phytotoxicity to crops after application compared to other commonly used high salt content products. The sensitivity of crops to phytotoxicity will differ and it is recommended that direct spraying of fruit be avoided where possible.

The formulation technology associated with the manufacture of **CERA BAIT** has resulted in a product that is free flowing and tank mixes easily. This feature greatly improves applicator safety. It reduces the time the operator is required to prepare the mix solution and ensures a more timely bait spraying operation.

Pack Sizes: Available in 5L and 20L packs

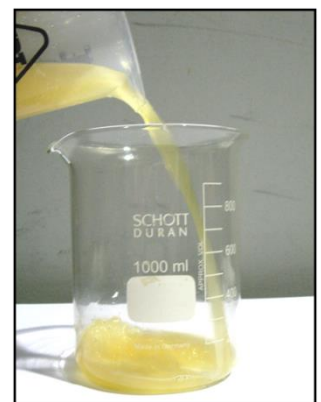
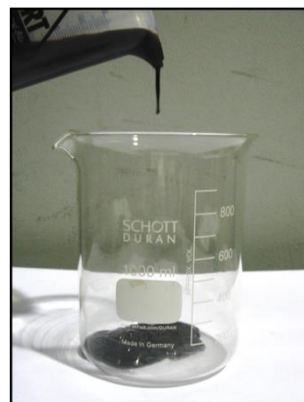


Product Characteristics:

Colour	Specific Gravity
Brown Liquid	1.1-1.2

Pourability Test – (non-diluted)

Competitor product on left, **CERA BAIT** on right





Mixing Test

Even with large amounts of water, the competitor product (left) is gummy and hard to mix, **CERA BAIT** (right) mixes easily in water.

Directions for Application:

CROP	SITUATION	APPLICATION RATE	COMMENTS
Citrus, Stone Fruits (Peaches, Apricots, Plums, Nectarines) Grapes, Mangoes, Avocados Tropical Fruits	Band Spray Treatment	0.4-1.5L / 100L Water	Apply as a foliar spray application in a mixture with a registered insecticide. Apply to the side of the tree oriented to the north as a coarse spray. Apply to one side of every row or every second row of trees.
	Spot Spray Treatment	3-4L / 100L Water	Apply in a mixture with a registered insecticide. Apply as a 100ml spot in every second tree in every second row

