

DIAZINON

Active Constituent: 800 g/L Diazinon

Diazinon is a popular, highly versatile general insecticide used to control soil and foliage insects as well as flies in many horticultural industries.

DIAZINON BENEFITS

- Diazinon has dual activity, both as a contact insecticide, as well as stomach poison activity after ingestion
- Diazinon has a good residual effect with degradation of around 30% after 60 days depending on soil and environmental conditions
- Diazinon does not accumulate in the soil and is biodegradable both by microbial and abiotic environmental factors
- Diazinon is a group 1B insecticide that is particularly effective as a contact insecticide on flies
- Diazinon's differential mode of action makes its useful in rotation, especially in resistance management rotations
- Diazinon is one of a small number of versatile insecticides registered for use in onions in Australia.

PACK SIZES

- Available in 5L and 20L packs

Onion Maggot



Macadamia Lace Bug

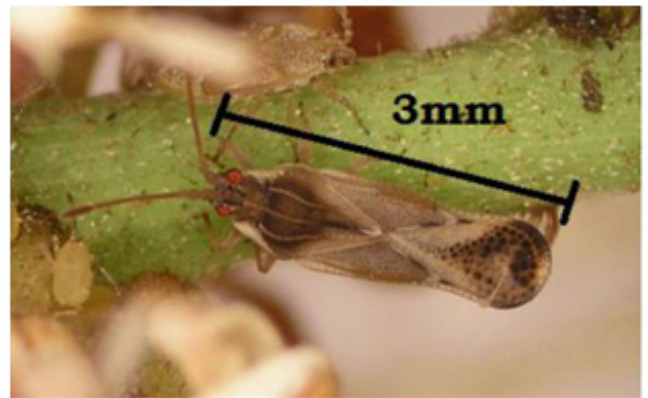


Photo 1 – Adult Lace Bug (*Ulonemia decoris*) on a raceme (approx 3mm long). Nymphs also present in the photo, directly above and to the left of the adult.

PRODUCT CHARACTERISTICS

Colour	SG
Light Brown	1.08





Diazinon- Contact Insecticide

a division of Amgrow

VEGETABLES

CROP	PEST	STATE	RATE			WHP	CRITICAL COMMENTS
			Vol/Ha	Vol/100 L Water	Per 15 L Knap-sack		
Beans	Bean Fly	NSW, Vic, Qld, WA only	150 mL	30 mL		14 days (H)	Spray thoroughly 3, 7 and 14 days after first plants emerge. Further weekly sprays may be necessary in heavy attacks.
	Bean Caterpillar		700 mL	–	–		Spray when necessary. Some control of aphids will be achieved.
	Blossom Thrips	NSW, Vic, SA, WA, Qld only	350 mL	30 mL	5 mL		Spray when crops are flowering and thrips are in damaging numbers. Repeat as necessary.
	Seed Maggot	NSW, Vic, SA, WA only	3 to 5 litres	–	–		Spray soil before sowing and work into a depth of 5 to 8 cm.
Cabbage, Cauliflower, Broccoli, Brussels sprouts, Kale and Kohlrabi	Cabbage White Butterfly, Centre Grub, Cluster Caterpillar, Cabbage Aphid, Green Peach Aphid	Qld only	700 mL	140 mL	30 mL		Spray to run off with a good coverage. Apply at 10 to 14 day intervals.
	Cabbage White Butterfly, Cabbage Moth	NSW, SA, WA only	700 mL to 1.4 Litres	140 mL	30 mL		Spray to run off with a good coverage. Apply at 10 to 14 day intervals. Vary boom spray rate according to plant size. Some control of aphids will be achieved.
	Cabbage Aphid	SA, WA only					
	Cabbage White Butterfly	Vic only					
	Looper	NSW, Vic, SA, WA, Qld only	700 mL	65 mL	15 mL		Spray to run off with a good coverage. Apply at 10 to 14 day intervals.
Beetroot, Silverbeet, Globe Artichoke	Webworm	NSW, Vic, SA, WA, Qld only	700 mL	–	–		Spray as necessary. Use 1 litre per hectare for advanced crops. Some control of aphids will be achieved.
Cucurbits	Thrips	NSW, Vic, SA,	350 mL	30 mL	5 mL		Spray when crops are flowering and thrips are in damaging numbers. Repeat as necessary.
Onions, Garlic	Onion Trips	WA, Qld only	700 mL	65 mL	–		Spray when thrips are in damaging numbers. Repeat every 10 days as necessary.
Onions	Onion Seedling Maggot	NSW, Vic, SA,	700 mL	65 mL	–		Spray foliage when flies appear, usually as plants emerge. Respray every 10 days if necessary.
	Onion Maggot, Wireworm	WA only	3 to 5 litres	–	–		Spray soil before sowing and harrow to a depth of 5 to 8 cm or irrigate immediately after application.
Potatoes	Potato Moth	Tas, SA only	1 litre	–	–		Spray immediately when "blister" stage is noticed. In SA follow up every 14 days as required. Apply at least 170 litres of water/Ha.



Diazinon- Contact Insecticide

a division of Amgrow

VEGETABLES – continued

CROP	PEST	STATE	RATE			WHP	CRITICAL COMMENTS
			Vol/Ha	Vol/100 L Water	Per 15L Knapsack		
Tomatoes	Thrips	Vic, SA, WA, Qld only	350 mL	30 mL	5 mL	14 days (H)	Spray from the seedling stage and repeat application at 7-14 day intervals as long as thrips are present. Effective thrip control is necessary to prevent Spotted Wilt Virus infection.
	Wireworms	NSW only	700 mL to 1.4 Litres	–	–		Spray soil either before sowing or transplanting and harrow to a depth of 50-80mm or irrigate immediately after application.
	Cutworms	NSW, Vic, SA, WA, Qld only					Spray as necessary. Vary rate according to plant size. Some control of aphids and thrips will be achieved.
Capsicum, Eggplant	Cutworms	NSW, Vic, SA,	700 mL to 1.4 Litres			14 days	
Sundry Vegetables*	Caterpillars, cutworm	WA, Qld only					

*Including Cantaloupes, Carrots, Celery, Chokos, Cucumbers, Gherkins, Lettuce, Marrows, Pumpkin, Parsnips, Peas, Squash, Watermelons, Rhubarb, Sweet Corn.

PASTURES, CEREALS, SORGHUM, SUNDRY CROPS AND MUSHROOMS

CROP/ PASTURE	PEST	STATE	Rate per hectare diluted in water. Boom spray, Aircraft, Mister	WHP	CRITICAL COMMENTS
Lucerne	Lucerne Jassid	Qld only	350 mL	2 days (G)	Spray with good coverage when pests are active.
	Spotted Alfalfa Aphid	Vic only	700 mL	14 days (H)	Spray when there are 20 to 40 aphids/stem on mature plants or 1 to 2 aphids per stem on seedlings.
		NSW only	500 mL		Spray as soon as practical following cutting and repeat as necessary.
Pastures	Pasture Webworm	Qld only	700 mL		
Pastures, Cereals (inc Maize, sorghum), Oil Seed Crops (inc Cotton), Soybeans, Sugar Cane	Australian Plague Locusts	NSW, Vic, SA, WA, Qld only	700 mL		Spray directly onto hopper bands and flying swarms.
	Spur-throated Locust, Migratory Locusts	Qld, NSW only	700 to 850 mL		Spray swarms in early morning or late evening when pests are roosting. Use higher rates in dense crops or if locusts are adults.
Cereal Crops, Pastures	Amyworm, Cutworm	All States	1 Litre		Spray when pests are first noticed and repeat in 10 days if necessary. Minimum application volumes per hectare- by boom spray 110 litres, by air or mister spray 22 litres.



Diazinon- Contact Insecticide

a division of Amgrow

PASTURES, CEREALS, SORGHUM, SUNDRY CROPS AND MUSHROOMS – continued

CROP/ PASTURE	PEST	STATE	Rate per hectare diluted in water. Boom spray, Aircraft, Mister	WHP	CRITICAL COMMENTS
Sorghum, Pastures	Grasshoppers	Vic, Tas, WA only	1 to 1.4 litres	2 days (G) 14 days	Spray swarms in early morning or late evening when pests are roosting.
Sorghum	Sorghum Midge	Qld only	350 mL	(H)	Spray from 90% sorghum head emergence to advanced flowering stage at 4 day intervals or as necessary, depending on pest numbers and crop potential.
		NSW only	350 to 700 mL		In NSW use the lower rate for light infestations. Use the higher rate if infestations are heavy or where reinfestation is likely to occur quickly.
Cotton	Cotton Flea Beetle, Red Shouldered Beetle	NSW only	350 to 500 mL		Spray when insects are present.
Chou Moellier, Carnola, Turnips	C a b b a g e Moth, Cabbage White Butterfly	SA, Vic only	700 mL	14 days (H)	Spray as necessary. DO NOT spray when bees are foraging.
Rice	Brown Plant Hopper	Qld only	350 mL	14 days (H)	Spray when pests are active. For aerial applications use at least 50 litres of spray per hectare.
	Bloodworm	NSW only	75 to 150 mL		Spray first at or within 24 hours of sowing by aircraft or ground application equipment to flooded bays. When the water depth is 150 mm or less use the 75mL per hectare rate. When water depth is between 150 mL and 300 mL or when high levels of recently incorporated organic matter are present, use 150 mL per hectare rate. Apply further treatments as required until plants are established with satisfactory secondary root development.

PLANTATION AND ORCHARD CROPS

CROP/ PASTURE	PEST	STATE	Rate per hectare diluted in water. Boom spray, Aircraft, Mister	WHP	CRITICAL COMMENTS
Pastures, Lawns, around trees.	Argentine Ants	WA only	High Volume: 600 mL/100 litres of water. Use at least 1 litre of spray per 10 square metres. Spray lawns on a grid pattern of 1 metre squares.	2 days (G)	Thoroughly spray ants nests and infested areas. Apply coarse spray to pests and all trees alongside foundation walls, fences, paths and garden beds.
Mushrooms	Mushroom Pests (various)	All States	At spawning: 140 mL in 10 litres of water per tonne of moist compost	14 days (H)	Mix thoroughly with compost at spawning.
			After casing: 30 mL in 10 litres of water per tonne of moist compost		Spray over top of casing soil immediately after casing.

CROP/ PASTURE	PEST	STATE	Rate per hectare diluted in water. Boom spray, Aircraft, Mister	WHP	CRITICAL COMMENTS
Nursery Plants	Aphids, Thrips, Mealy Bugs, Scale Insects, Plant Bugs, Beetles	NSW, Vic only	Dipping mixture: 60 mL per 100 litres		Thoroughly drench plant material with the dipping mixture. Treatment can be used for plants being transported from NSW into Victoria.
Ornamentals, Potted Plants	Fungus Gnats	Qld only	2 mL per 10 litres of water		Apply as a drench. If problem persists, reduce watering or repot plants using less organic matter. Treat a few plants first to test for phytotoxicity.



Diazinon- Contact Insecticide

a division of Amgrow

PLANTATION AND ORCHARD CROPS – continued

CROP	INSECT PEST	STATE	High Volume per 100 Litres of Water	WHP	CRITICAL COMMENTS
Apple, Pears (Dormant)	San Jose Scale	NSW, Vic, SA, WA only	65 mL	14 days (H)	Add 3 litres of winter oil per 100 litres of spray. Spray thoroughly 2 weeks before green tip.
Apples, Pears		Vic, WA only	65 mL		Add 1.2 litres of summer oil per 100 litres of spray. Spray at petal fall, in early Dec. and again in mid Jan. if scale is serious. Also apply in autumn if scale is evident in the harvested crop.
Apples	San Jose Scale, Woolly Aphid	SA, NSW only	65 mL		Spray at petal fall, in early Dec. and again in mid Jan. if scale is serious. These applications will keep woolly aphids in check during the period they are applied. This product will not adversely affect populations of predatory <i>Typhlodolus occidentalis</i> and <i>Typhlodromus pyri</i> .
			65 mL		Add 1.2 litres of summer oil per 100 litres of spray. Apply in autumn if scale or aphids are evident in harvested crop.
	Greedy Scale	WA only	65 mL		Add 3 litres of oil per 100 litres of spray. Spray when buds are swelling.
			65 mL		Spray as required November to March.
Bananas	Banana Beetle Borer	NSW only	125 mL		Spray in spring and again in late summer when adult beetles are present. Spray 600 mL to the base of each plant.
	Banana Rust Thrip	Qld only	50 mL		Ensure good coverage of fingers and penetration inside bunch. Apply as required when the bunch is fully emerged until bracts have fallen. Apply every 14 days between Nov. and March in North Queensland when thrips are most active.
Blueberries	Scale Insects	NSW only	70 mL		Spray in late afternoon after bees have finished foraging.
Citrus	Spined Citrus Bug	NSW only	65 mL		Add 1 litre of Winter Oil/100 litres of spray. Thoroughly wet bugs.
	Citrus Leaf Miner	Qld, NSW only		DONOT spray when fruit is less than 2.5 cm diameter to avoid blemish.	
	Grasshoppers	Qld only		Spray young growth every 10 days when pests are active.	
Cumquats, Trifoliolate Orange	Citrus Leafminer	NSW only	65 mL	Spray when necessary.	
				Check susceptible growth flushes mainly in late summer-autumn period. Apply thoroughly to the underside of infested leaves. Two sprays are normally required at 10 to 14 day intervals or a higher number of applications may be required in nursery situations.	



Diazinon- Contact Insecticide

a division of Amgrow

PEST CONTROL

SITUATION	PEST	STATE	RATE			CRITICAL COMMENTS
			SPRAYER	MISTER	SWING-FOG	
Commercial and Industrial Buildings, Ships, Farm Buildings including Kennels, Stables and Piggeries, Refuse Areas, Garbage Containers	Cockroaches, Silverfish, Carpet Beetles, Fleas, Flies, Spiders	All States			60 mL per litre of fogging oil or distillate	<ul style="list-style-type: none"> • DO NOT use where there is exposed food, food utensils or food processing machinery. • DO NOT use in food preparation areas, eg kitchens, tea rooms. • Avoid fogging drinking water or feedstuffs.
Homes, Flats, Hotels, Bakeries, Canteens, Commercial and Industrial Buildings, Ships, Farm Buildings including Kennels, Stables and Piggeries, Refuse Areas, Garbage Containers	Cockroaches, Silverfish, Carpet Beetles, Bed Bugs		6 mL per litre of water or kerosene	15 mL per litre of water or kerosene		Apply to crevices, cracks and hiding places, eg beneath cupboards, behind sinks and stoves. Apply to floors and under carpets. Spray should be applied under beds, along skirting boards and anywhere bed bugs may be able to shelter, as well as lightly to bedding.
	Fleas					Areas generally infested with fleas should be sprayed as well as sleeping and resting areas of pets. Change infested bedding.
	Flies		6 mL per litre of water			Apply to surfaces on which insects congregate, eg ceilings, under eaves, walls.
	Spiders					Remove existing webbing and saturate area with the mixture.
	Ants					Apply to ant trails. Attempt to locate nests and thoroughly saturate surface. Use at least 1 litre of mixture per 10 square metres.
	Refuse Areas, Garbage Containers		Maggots	60 mL per 100 litres of water	15 mL per litre of water or kerosene	60 mL per litre of fogging oil or distillate
Ponds, Stagnant Water	Mosquito Larvae		125 mL per 100 litres of water	2 mL in diesel oil or kerosene per 100 square metres	180 mL in fogging oil or distillate per hectare	Apply to breeding areas.
Skins and Hides	Skin and Hide Beetles		6 mL per litre of water			Apply 60 mL of mixture per hide individually, and spray area with 5 litres of mixture per 100 square metres.