

POISON

KEEP OUT OF REACH OF CHILDREN
READ SAFETY DIRECTIONS BEFORE OPENING OR USING

BARMAC

Scuttle

COCKROACH GEL

ACTIVE CONSTITUENT: 20 g/kg HYDRAMETHYLNON

**A ready to use gel formulation for the control of Cockroaches
in Domestic, Commercial and Warehousing premises.**

GROUP 20A INSECTICIDE



BARMAC (A division of Amgrow)

ABN 81 100 684 786

17 MACHINERY STREET

DARRA QLD 4076

Phone: (07) 3727 3000

www.barmac.com.au

APVMA APPROVAL NUMBER 56398/0907

The syringe must be returned to the outer package while the product still remains.

Do not destroy the outer carton while the product still remains.

IMPORTANT: Read this leaflet before use.

DIRECTIONS FOR USE:

RESTRAINTS

- DO NOT place baits in areas that are regularly washed as this will remove bait.
- DO NOT use in areas accessible to children and pets.
- DO NOT use near open food and food contact surfaces.
- DO NOT use this product on or around electrical equipment due to the possibility of electrical shock.
- DO NOT apply gel to areas which have been recently sprayed with insecticides, or spray insecticides over gel placements, as this may cause the gel to become repellent.
- DO NOT apply to surfaces where the temperature exceeds 54° C.

Application Rate is dependent on level of infestation and species to be controlled.

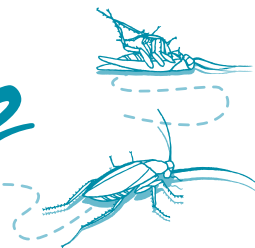
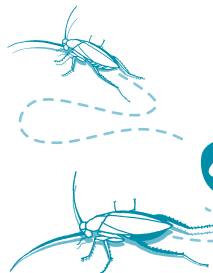
COCKROACH SPECIES	APPLICATION RATE (g/m ² infested surface area)	APPLICATION METHOD	CRITICAL COMMENTS
German	0.25 - 0.50	Small Spots	Use the lower application rate for low to moderate infestations and the higher rate for more severe infestations
Large, such as Australian, American, Smoky brown or Oriental	0.5 - 1.0	Large Spots	

NOT TO BE USED FOR ANY PURPOSE, OR IN ANY MANNER CONTRARY TO THIS LABEL UNLESS AUTHORISED UNDER APPROPRIATE LEGISLATION.

BARMAC

Scuttle

COCKROACH GEL



GENERAL INSTRUCTIONS:

Barmac Scuttle Cockroach Gel is a bait which must be consumed by cockroaches to be effective.

Barmac Scuttle Cockroach Bait may be used as a spot or crack and crevice treatment for the control of cockroaches in and around homes, institutional, warehousing and commercial establishments, including hospitals, laboratories, computer facilities, sewers, buses and other transport vehicles or vessels, pet shops and zoos.

Gel placements should be at or near harborages or aggregation areas, such as cracks and crevices, corners or areas of movement. Use locations include undersurfaces only of tables, counters, shelving, drawers and sinks and around pipe collars, above suspended ceilings, inside electrical boxes, adjacent or under rubbish receptacles and carts, under and behind stoves and refrigerators, under drain plates and around electrical equipment and machines.

Priority treatment areas may be identified by visual inspection or such areas listed above or aided by trapping techniques or spot flushings.

Pest population reductions will be apparent within a week or less, Cockroaches become lethargic after ingesting the bait and some may be seen during daylight hours.

APPLICATION:

Remove the cap, touch tip of nozzle to surface and apply. The bait will adhere to non-greasy or non-dusty surfaces and will remain palatable to cockroaches as long as it is visible. Recap nozzle after use to preserve bait freshness.

Reapply when bait is no longer visible, according to the remaining level of infestation. This is generally at a lower rate than the initial application. When treating high infestations a visual inspection of bait placements is recommended one week after initial application.

Numerous smaller applications will provide faster control than a small number of larger spots, particularly for German Cockroaches.

Notice: This product is designed only for the particular purposes indicated on the label. Failure to use the product strictly as directed may be illegal, prove dangerous and render the product ineffective.

PRECAUTION: DO NOT place baits in locations where washing operations may transfer diluted bait to food or food preparation surfaces.

DO NOT place product in locations that are accessible to children.

INSECTICIDE RESISTANCE WARNING

GROUP	20A	INSECTICIDE
-------	-----	-------------

For insecticide resistance management Barmac Scuttle Cockroach Gel is a group 20A insecticide.

Some naturally occurring insect biotypes resistant to this product and other 20A insecticides may exist through normal genetic variability in any insect population. The resistant insects can eventually dominate the insect population if Barmac Scuttle Cockroach Gel or other group 20A insecticides are used repeatedly. The effectiveness of this product on resistant individuals can be significantly reduced. Since occurrence of resistant individuals is difficult to detect prior to use, Barmac accepts no liability for any losses that may result from failure of Barmac Scuttle Cockroach Gel to control resistant insects.

Barmac Scuttle Cockroach gel may be subject to specific resistance strategies. For further information contact your local supplier, Barmac representative or local agricultural department agronomist.

PROTECTION OF LIVESTOCK: Domestic animals may find this product attractive. DO NOT place product in areas that are accessible to domestic animals, livestock or birds.

PROTECTION OF WILDLIFE, FISH, CRUSTACEANS AND ENVIRONMENT: DO NOT contaminate streams, rivers or waterways with the chemical or used container.

STORAGE AND DISPOSAL: Store in the closed original container in a cool, dry, well ventilated place away from direct sunlight. Break empty containers, place in a plastic bag, wrap in newspaper and place in rubbish bin. Empty containers or product should not be burned.

SAFETY DIRECTIONS: Should not be used in areas accessible to children. Harmful if swallowed. When using the product wear rubber gloves. Wash hands after use. After each days use wash rubber gloves.

FIRST AID: If poisoning occurs, contact a doctor or Poisons Information Centre. Telephone 131126 Australia wide.

MATERIAL SAFETY DATA SHEET: Additional information is listed on the Material Safety Data Sheet available from Barmac or from our internet site www.barmac.com.au.

Scut1PLft0711V1